



## Summary & Perspective

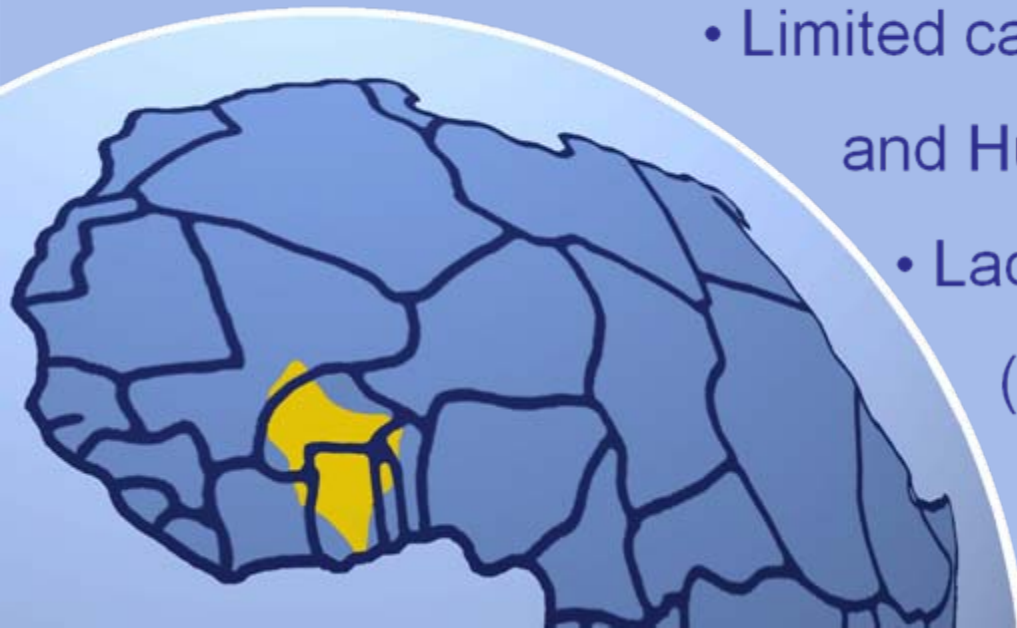
Prior to  
Contribution of  
Remainder of  
Beyond



Boubacar Barry,  
Jens Liebe, Charles Rodgers,  
Nick van de Giesen, Paul L. G. Vlek

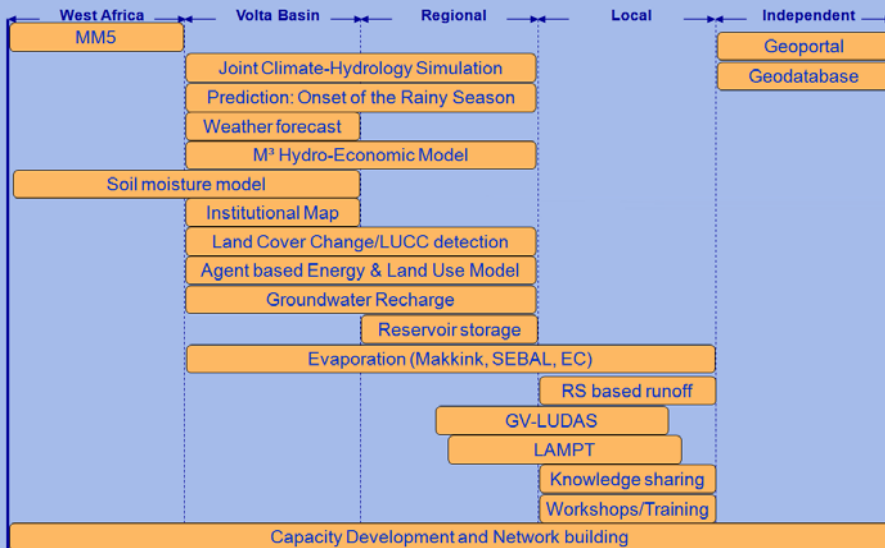
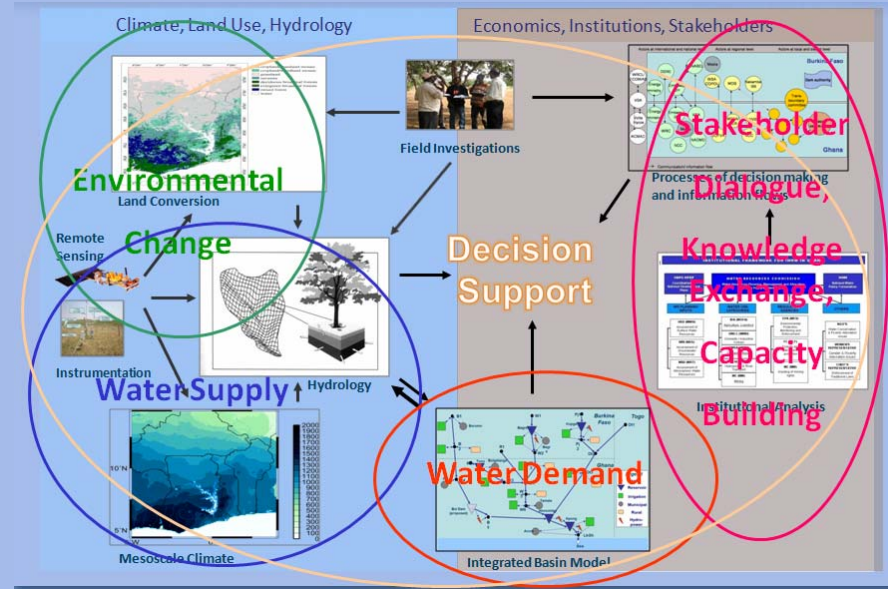
## Prior to GVP

- Scattered data
- Non integrated approach
- Absence of coordination and dissemination of information
  - Lack of decision support tools
  - Limited capacity (Data Acquisition and Human Resources)
  - Lack of International collaboration (North-South & South-South)



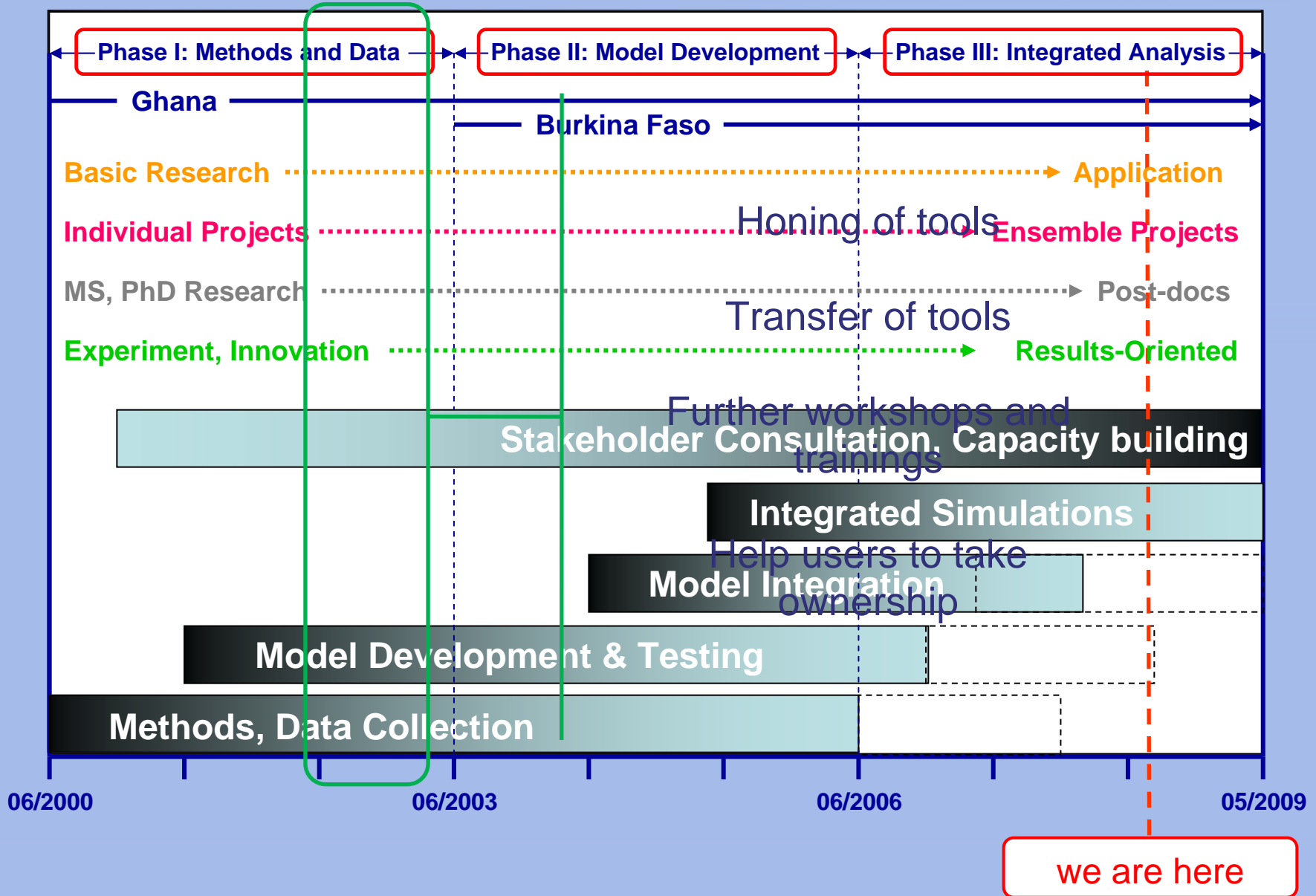
## GVP Contribution

- Analysis of physical & social determinants of the hydrological cycle
- Decision Support
- Capacity building





## Remainder of GVP



## Beyond GVP

- Data gathering (database)
- Modelling tools
- Water resource management
- Strengthening VBA, national water resource commission, and grassroots organizations





**GLOWA**Volta



**Thank you**

Expo tomorrow

Podium discussion



We gratefully acknowledge the generous support of the  
German Federal Ministry of Education and Research